



THE AMBULANCE SERVICE ASSOCIATION  
*The voice of the NHS Ambulance Service*

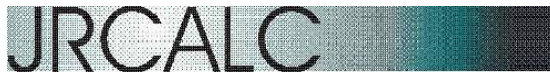


National Clinical  
Effectiveness Programme

Friars House  
157 – 168 Blackfriars Road  
London  
SE1 8EU

Tel: 020 7928 9620  
Fax: 020 7928 9502

In partnership with



JOINT ROYAL COLLEGES AMBULANCE LIAISON COMMITTEE

Email: [info@asancep.org.uk](mailto:info@asancep.org.uk)  
Web: [www.asancep.org.uk](http://www.asancep.org.uk)

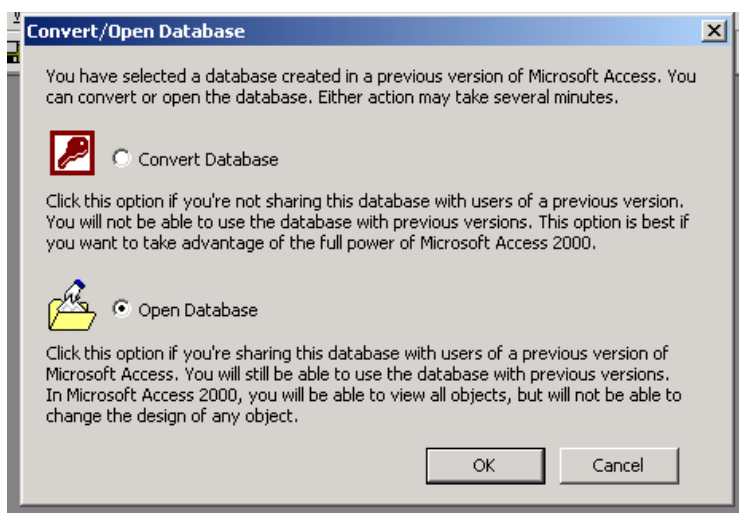
## JRCALC/ASA CHD Database

### Opening the database in Access 97

The database has been designed using Microsoft Access version 97.

If you are using Microsoft Access 97 there is no need to read this instruction.

If you are using a later (i.e. newer) version of Microsoft Access, when you open the database you will see the following dialogue box:



### INSTRUCTIONS

You **MUST** select '*Open Database*'

This will allow you to add local reports and queries but you will not be allowed to edit existing objects.

Defaults will be edited at installation and can only be changed with the consent of the ASANCEP.

If you select '*convert database*' some of the programme coding may not work and may interfere with the export function.